

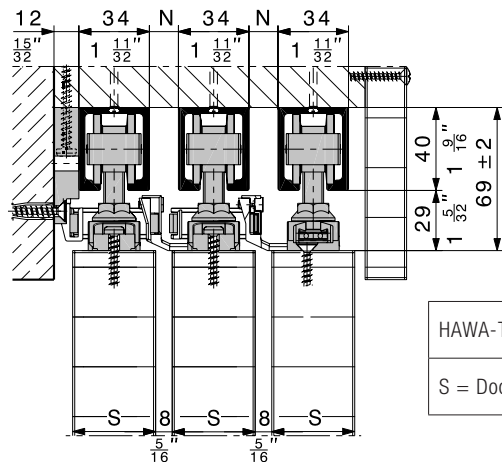
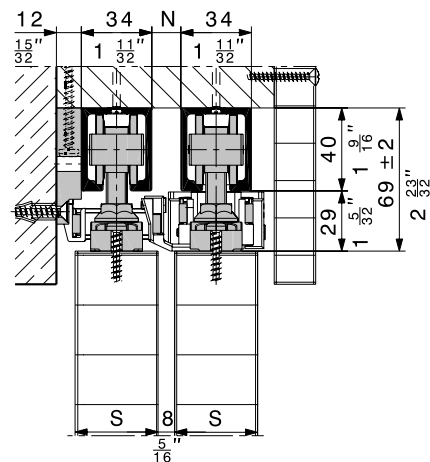
Hardware system for simultaneous sliding of 2 to 3 doors weighing up to 80 kg (176 lbs.) or 4 doors weighing up to 40 kg (88 lbs.).

### Description

Two or three doors can be moved simultaneously to the left or right when combined with the tried and tested HAWA-Junior 80/Z Technik and the HAWA-Telescopic 80/2 or 80/3 hardware. The version incorporating the HAWA-Telescopic 40/4 allows two sliding doors to be opened simultaneously to the left and to the right.

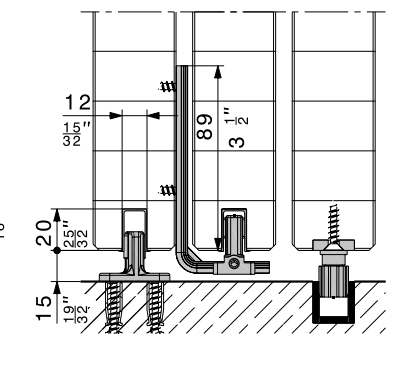
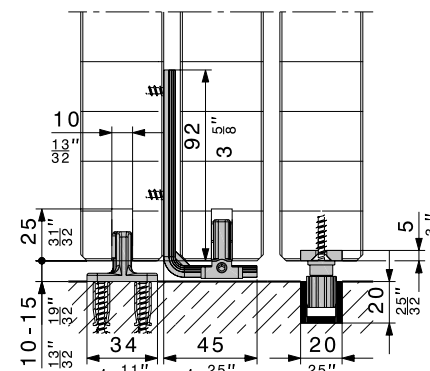
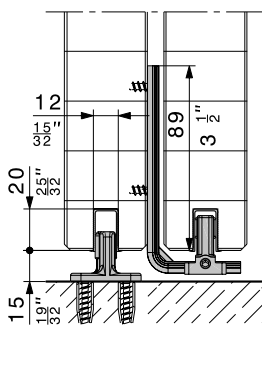
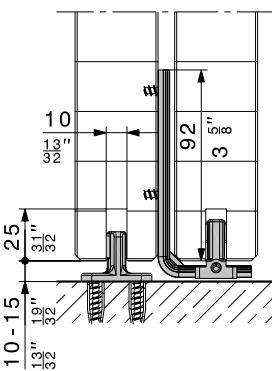
### Features of the HAWA-Telescopic 80/2 - 80/3 - 40/4

- Maximum door weight 80/2, 80/3: 80 kg (176 lbs.)
- Door width 80/2, 80/3: 500-1200 mm (1'7 11/16" - 3'11 1/4")
- Door thickness 80/2: 32-47 mm (1 9/32" - 1 27/32")
- Door thickness 80/3: 40-47 mm (1 19/32" - 1 27/32")
- Maximum door weight 40/4: 40 kg (88 lbs.)
- Door width 40/4: 500-800 mm (1'7 11/16" - 2'7 1/2")
- Door thickness 40/4: 40-47 mm (1 19/32" - 1 27/32")
- Offers all the quality benefits of HAWA-Junior 80/Z products
- Telescopic opening of two to three sliding doors
- Symmetrical opening of four sliding doors
- Allows large openings
- Fibreglass-reinforced toothed belts guarantee high tensile strength and a low level of expansion

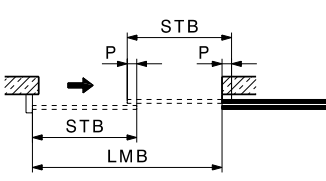


$$N = S - 26 \text{ mm } (1 \frac{1}{8} \text{")}$$

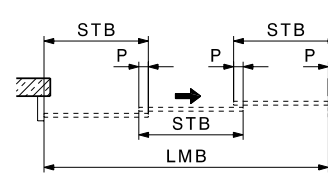
HAWA-Telescopic	80/2	80/3	40/4
S = Door thickness	32-47 mm (1 9/32" - 1 27/32")	40-47 mm (1 19/32" - 1 27/32")	



### Calculation for sliding door width

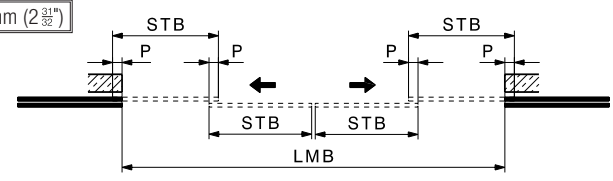


$$\text{2-panel: } STB = \frac{(2 \times P) + LMB}{2}$$



$$\text{3-panel: } STB = \frac{(3 \times P) + LMB}{3}$$

$P \geq 75 \text{ mm } (2 \frac{31}{32} \text{")}$



$$\text{4-panel: } STB = \frac{(4 \times P) + LMB}{4}$$

## HAWA-Telescopic 80/2

	code
HAWA-Telescopic 80/2, partial set for 2 panel, 500–1200 mm (1'7 $\frac{11}{16}$ "–3'11 $\frac{1}{4}$ "	20657
Two HAWA-Junior 80/Z sets are required in addition	11705

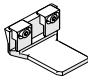
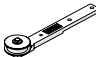
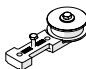
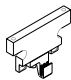
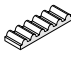
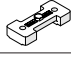
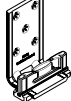

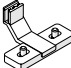
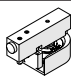
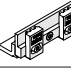
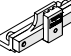
## HAWA-Telescopic 80/3

	code
HAWA-Telescopic 80/3, partial set for 3 panel, 500–1200 mm (1'7 $\frac{11}{16}$ "–3'11 $\frac{1}{4}$ "	20765
Three HAWA-Junior 80/Z sets are required in addition	11705

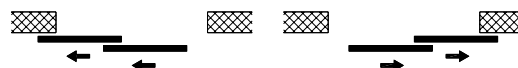
## HAWA-Telescopic 40/4

	code
HAWA-Telescopic 40/4, partial set for 4 panel, 500–800 mm (1'7 $\frac{11}{16}$ "–2'7 $\frac{1}{2}$ "	20658
Four HAWA-Junior 80/Z sets are required in addition	11705

## Partial sets comprising

		20657	20765	20658	code	
	Driver, wide	1	2	2	20141	
	Guide pulley wheel, with fixing plate, long	1	2	2	20139	
	Guide pulley wheel, with fixing plate, short	1	2	2	20140	
	Toothed belt fixing device for ceiling/wall mounting, complete	1	1	2	20732	
	Toothed belt black, fibre glass reinforced	2,7 m (8'10 $\frac{3}{8}$ "	1	2	2	20208
		10 m (32'9 $\frac{3}{8}$ "	–	–	1	19668
	Driver counter-plate, wide	1	1	2	20246	
	HAWA-Confort 120, single, floor mounted guide rattle proof	1	1	2	16158	
	Guide plate with rattle proof guide piece 14 mm (9/16)	–	1	–	13325	
	Driver, narrow	–	1	–	20142	
	Guide pulley wheel matching with running track HAWA-Junior 80	–	–	2	20653	
	Toothed belt lock for manual systems	–	–	1	20352	
	Driver, laterally adjustable for manual systems	–	–	1	20353	

Partial set code 20657 for HAWA-Telescopic 80/2 (2-panel)



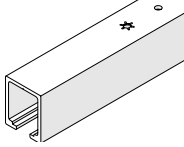
Partial set code 20765 for HAWA-Telescopic 80/3 (3-panel)



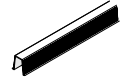
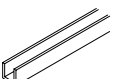
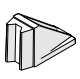
Partial set code 20658 for HAWA-Telescopic 40/4 (4-panel)



## Running tracks

Caution: Hole positions vary		mm/inch	code
	Running track, alu plain anodized, predrilled	1400 (4'7 $\frac{1}{8}$ "	10189
		1600 (5'3"	10190
		1800 (5'10 $\frac{7}{8}$ "	10191
		2000 (6'6 $\frac{3}{8}$ "	10192
		2200 (7'2 $\frac{3}{8}$ "	10193
		2500 (8'2 $\frac{7}{8}$ "	10194
		3000 (9'10 $\frac{1}{8}$ "	18532
		4000 (13'1 $\frac{1}{2}$ "	18533
		6000 (19'8 $\frac{7}{8}$ "	10186
	cut to size	10188	

## Guides / Bottom door stop

Caution: Minor differences in colour are possible		code	
	Guide profile, plastic black, 1300 mm (4'3 $\frac{3}{8}$ "), groove mounted, set of 10 pieces	14540	
	Bottom guide channel, alu plain anodized, predrilled, 20 x 20 x 3 mm (3/8" x 3/8" x 1/8")	6000 (19'8 $\frac{7}{8}$ "	14414
		cut to size	14415
	Bottom door stop with centering assembly	dull chromium finish	20773
		stainless steel effect	21473

Further accessories: → pages 68 – 83

## Order specifications

- Quantity and Type of partial set
- Quantity of HAWA-Junior 80/Z-sets
- Length of running tracks

## Planning/installation

For planning and installation purposes, please use the installation drawings:

- HAWA-Telescopic 80/2 code 23167
  - HAWA-Telescopic 80/3 code 23168
  - HAWA-Telescopic 40/4 code 23169
- (→ [www.hawa.ch](http://www.hawa.ch) → HAWA-Productfinder)