

Hardware system for inlaying sliding cabinet doors up to 40 kg (88 lbs.).

Description

The HAWA-Dorado 40/IS is a high-quality hardware system equipped with a patented suspension system. It permits very quick and easy installation. A 35 mm ($1\frac{3}{8}$ ") press-fit cup permits the sliding doors to be installed and removed from below with a fixed facing, or from the front if the facing is removed. Progressive vertical and lateral adjustment can be carried out without removing the sliding doors as long as the hardware system is freely accessible on the inside of the cabinet. The sliding doors are held by a bottom guide channel fixed at one point.

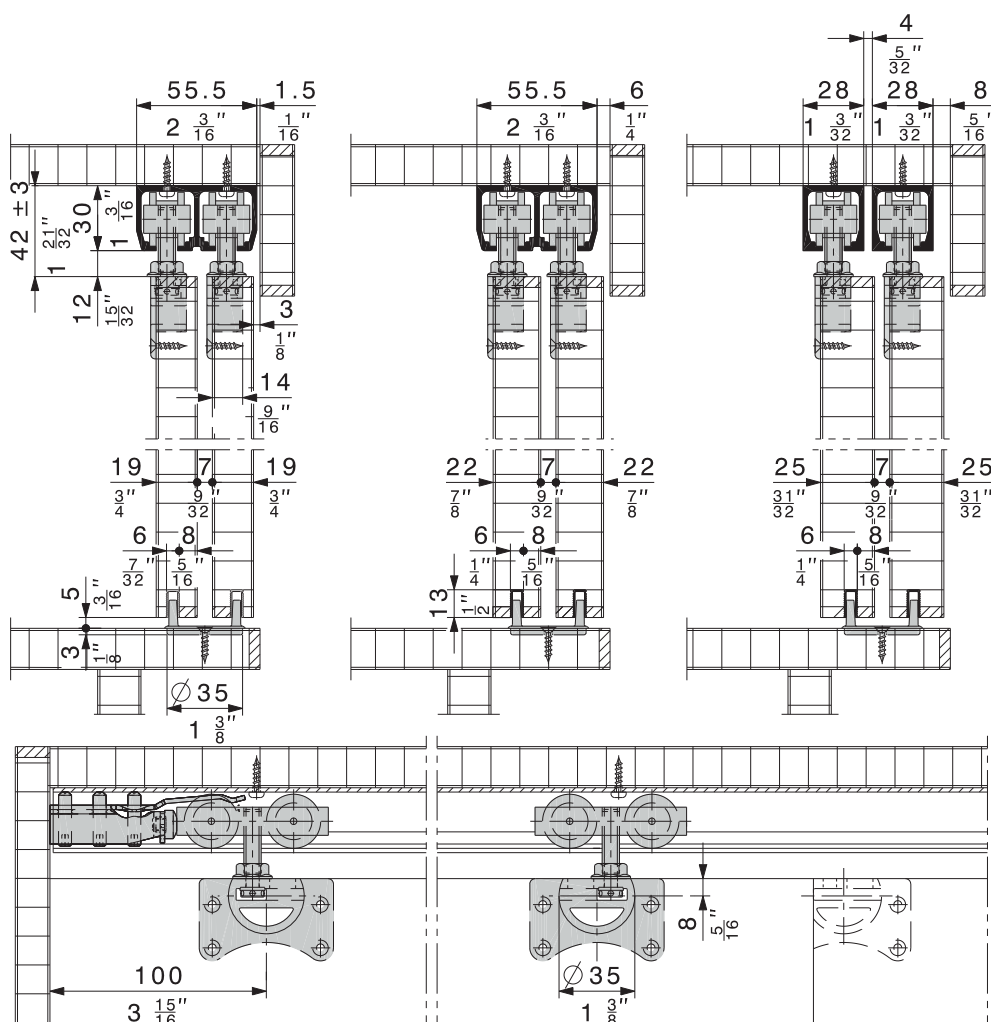
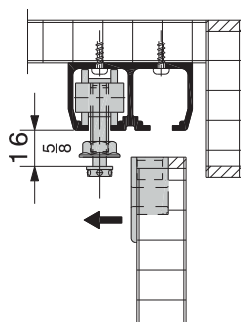
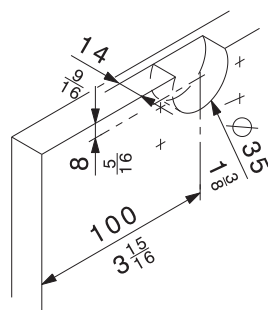
If the doors are to be subjected to a great deal of use, we recommend using the HAWA-Dorado 40/MS. With this hardware system the sliding doors are held by a bottom guide channel fixed at two points.

Applications

This hardware system is ideal wherever well-constructed high-quality cabinets with smooth-running sliding doors are required, e.g. interior design, offices, etc.

Features of the HAWA-Dorado 40/IS

- Maximum sliding door weight 40 kg (88 lbs.)
- Door thicknesses 19, 22 and 25 mm ($\frac{3}{4}$ ", $\frac{55}{64}$ " and $\frac{63}{64}$ ")
- Concealed press-fit cup, 35 mm ($1\frac{3}{8}$ ")
- Simple vertical adjustment ± 3 mm ($\frac{1}{8}$ ")
- Track stop with adjustable retainer



Subject to modification. Metric specifications are exact. Inches are approximate.

