

Supplementary hardware system for bi-folding furniture doors combined with HAWA-Turnaway 25/X2 and 35/X3.

Description

The HAWA-Folding Turnaway 15/20 is a supplementary hardware system for folding and turning away two furniture doors with a panel weight up to 20 kg (44 lbs.). The second door is guided in a bottom guide channel with a suspending and a guide element when it is opened and turned away. When the doors are closed, they are guided in the suspending element. This means that the horizontal door groove clearance is always the same. A retainer positions the panels at the bottom and holds them flush when closed.

Applications

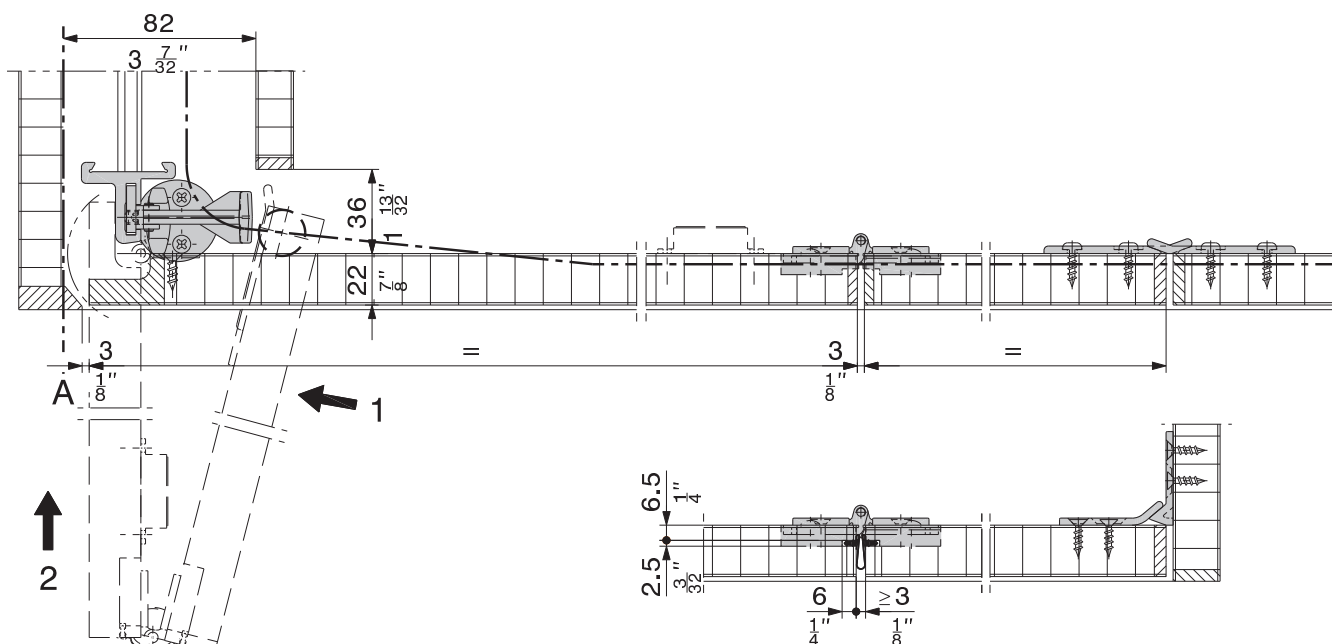
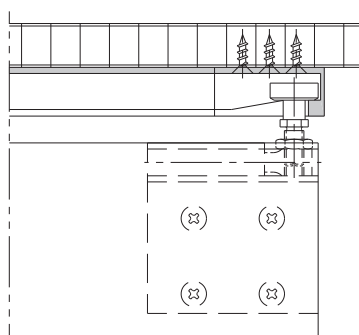
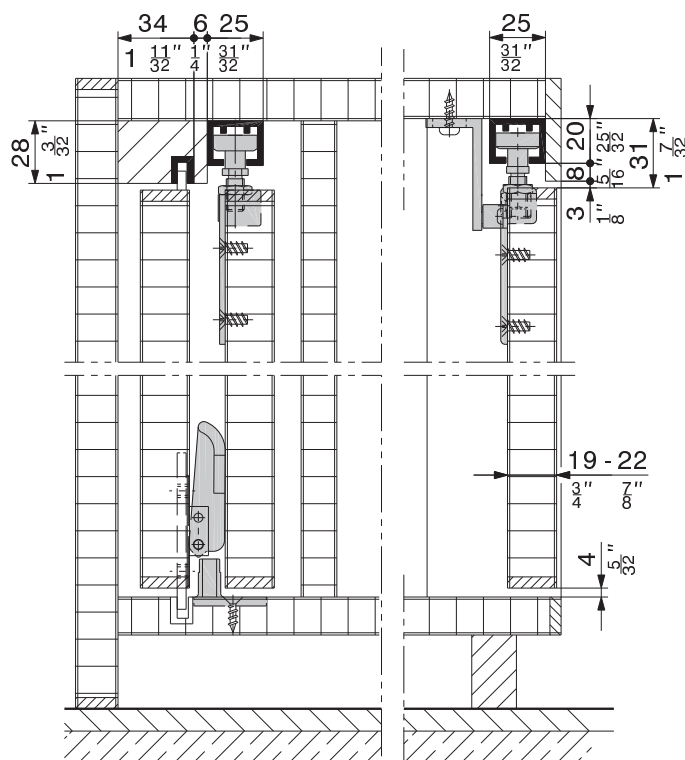
This hardware system is suitable for use wherever furniture doors should not protrude into a room due to space restrictions, e.g. classrooms, media walls, conference rooms, etc.

Features of the HAWA-Folding Turnaway 15/20

- Panel height: 650–1500 mm (2'1 $\frac{19}{32}$ "–4'11 $\frac{1}{16}$ ")
Maximum panel weight: 15 kg (33 lbs.) (per pair of panels 30 kg (66 lbs.))
- Panel height: 1501–2450 mm (4'11 $\frac{3}{32}$ "–8'0 $\frac{29}{64}$ ")
Maximum panel weight: 20 kg (44 lbs.) (per pair of panels 40 kg (88 lbs.))
- Maximum panel width: 600 mm (1'11 $\frac{5}{8}$ ")
- Door thicknesses: 19–22 mm ($\frac{3}{4}$ "– $\frac{55}{64}$ ")

Positioning of the panels

The top-mounted magnetic catch holds panels in the closed position.



Subject to modification. Metric specifications are exact. Inches are approximate.


Supplementary hardware sets for HAWA-Folding Turnaway 15/20 system

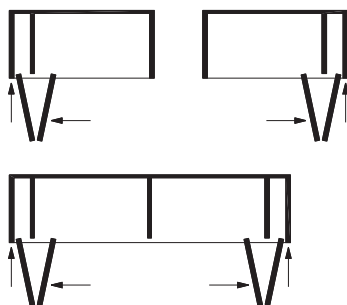
		H mm/inch	code
HAWA-Folding Turnaway 15/20	left	650–2450 (2'1 ¹⁹ / ₃₂ – 8'0 ²⁹ / ₆₄)	16756
	right		16757

Basic hardware sets for HAWA-Turnaway 25/X2 35/X3 system

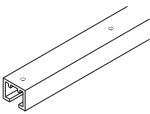
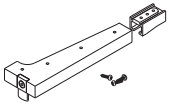
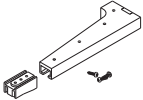


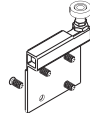
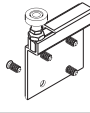
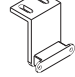

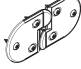

		panel weight kg (lbs.)	H mm (inch)	code
HAWA-Turnaway 25/X2 panel height	left	15 (33)	650–1050 (2'1 ¹⁶ / ₃₂ –3'5 ¹¹ / ₃₂)	17145
	right			15922
HAWA-Turnaway 25/X2 panel height	left	15 (33)	1051– 1200 (3'5 ³ / ₈ –3'11 ¹ / ₄)	10684
	right			10685
HAWA-Turnaway 25/X2 panel height	left	15 (33)	1201– 1500 (3'11 ⁹ / ₃₂ –4'11 ¹ / ₁₆)	10686
	right			10687
HAWA-Turnaway 25/X2 panel height	left	20 (44)	1501–1800 (4'11 ³ / ₃₂ –5'10 ⁵⁵ / ₆₄)	10688
	right			10689
HAWA-Turnaway 35/X3 panel height	left	20 (44)	1801–2450 (5'10 ²⁹ / ₃₂ –8'0 ²⁹ / ₆₄)	10700
	right			10701
To be considered when ordering: The HAWA-Folding Turnaway hardware system comprises 1 basic set HAWA-Turnaway and 1 supplementary set HAWA-Folding Turnaway.				

Vertical seal profiles, styrene-butadiene rubber (SBR)

			code
	Seal profile, white similar RAL 9010	5-m roll (16'4 ²⁷ / ₃₂)	15227
	Seal profile, black, similar RAL 9011	5-m roll (16'4 ²⁷ / ₃₂)	15224



Supplementary sets comprising

Caution: Hole positions vary.	16756	16757	code
	Guide channel 700 mm (2'3 ⁹ / ₁₆) alu black anodized, predrilled		1 1 14013
	Guide channel 1300 mm (4'3 ³ / ₁₆) alu black anodized, predrilled		1 1 14014
	1	–	16758
	–	1	16759
	1	–	16134
	–	1	16133
	1	–	17069
	–	1	16999
	1	1	17243
	4	4	15586
	1	1	14906
	1	1	17266

Order specifications

- Clear dimension between cabinet floor and top
- Number and type of basic sets
- Number of supplementary sets

Planning/Installation

Please use for planning and execution the installation drawing code 17067. (→ www.hawa.ch → HAWA-Productfinder)